

Mihail Petkovski

University Ss. Cyril and Methodius in
Skopje,
Faculty of Economics,
Republic of North Macedonia
✉ mihail.petkovski@yahoo.com

Jordan Kjosevski

Corresponding author
Independent Researcher,
Republic of North Macedonia
✉ koseskijordan@gmail.com

Kiril Simeonovski

Ministry of Finance,
Republic of North Macedonia
✉ kiril.simeonovski@gmail.com

Testing for Causality between Remittances and Inflation: Evidence from Central and Eastern Europe

Summary: The goal of this study is to examine the impact of remittance inflow on inflation using the System Generalized Method of Moments (SGMM) and Dumitrescu-Hurlin Granger causality approach in countries from Central and Eastern Europe over the period 1994 to 2019. As the levels of economic and financial development vary considerably across these countries and some of them are member states of the European Union (EU), we split them into two more homogeneous groups - EU member states and non-EU countries. The application of the SGMM approach reveals that remittances have a negative and significant impact on inflation in the non-EU countries, whereas they exert positive impact in the EU member states and in the whole region overall. The Granger causality test shows a unidirectional causal relationship between remittances and inflation in all country groups, whereas the existence of a positive causal relationship from remittances to inflation has been established in twelve countries.

Keywords: Inflation, Remittances, Central and Eastern European countries, Dumitrescu-Hurlin Granger causality approach, System GMM.

JEL: C23, E61.

In this paper, we empirically explore the effects of remittances on inflation in a group of 20 countries from Central and Eastern Europe over to 2019. Central and Eastern Europe is one of the most relevant remittance-recipient regions in the world. This is mainly because of the large number of emigrants from this region predominantly as a result of economic motives and the strong ties that the emigrant population maintains with the families in their country of origin (Mihail Petkovski, Jasminka Dodeva, and Vesna Georgieva 2011). Considering that the economic and financial development vary considerably across countries and that some countries are member states of the European Union, we find it convenient to split them into two groups - EU member states (EU-11) and non-EU countries (NEU-9) - which further enables us to study the differences and derive the characteristics that can be attributed to the EU membership. To test the relationship between remittances and inflation, we apply the System Generalized Method of Moments (SGMM), which takes into account the substantial number of parameters and allows to deal with the potential endogeneity problem.

This paper contributes to the economic literature in the following ways. First, it enriches the strand of literature on inflation with a study that identifies the remittance

inflow as a potential factor, which may be of particular importance for future research on the topic. Second, it also enriches the literature on the topic covering the region of Central and Eastern Europe, especially because the countries in this region have higher emigration rates to the more developed countries and are thereby subject to higher levels of remittance inflow. Third, this paper may be helpful for policy makers because its intent to identify the factors leading to the established relationship may provide valuable knowledge in the process of conceiving specific economic policies.

The rest of the paper is organized as follows. Section 1 briefly reviews the related existing literature on the relationship between remittances and inflation. Sections 2 to 3 define the variables used in the model and describe the differences across countries and country groups, as well as the main trends in the time evolution of the variables. Section 4 presents the detailed methodology applied to investigate the relationship and Section 5 reports the main findings from the empirical analysis. Section 6 concludes with final remarks and explanations.

1. Literature Review

This section gives a brief overview of the empirical literature concerned with the relationship between remittances and inflation. The reviewed literature consists of both papers studying single countries (Hiranya K. Nath and Ulyses Balderas 2008; Anum Nisar and Saira Tufail 2013; Zakir Saadullah Khan and Shamimul Islam 2013) and papers analyzing panels of multiple countries (Nicolas Glytsos 2002; Paresh Kumar Narayan, Seema Narayan, and Sagarita Mishra 2011; Christopher Ball, Claude Lopez, and Javier Reyes 2013; Ali Termos, George Naufal, and Ismail Genc 2013; Rashid Sbia and Helmi Hamdi 2020). In general, the literature examining the impact of remittances on inflation is recent and scarce, yet the findings in most of the studies are compatible with the existence of inflationary pressure caused by remittance inflows.

Glytsos (2002) builds a Keynesian-type econometric model for investigating the short- and long-term multiplier effects of remittances on consumption, investment, imports, and output using data on five Mediterranean countries. The author reveals that a uniform country performance of instability and uncertainty with great temporal and intercountry fluctuations of remittance effects. The findings point out to different intercountry priorities of remittance spending and to an asymmetric impact of remittance changes in the sense that the good done to growth by rising remittances is not as great as the bad done by falling remittances.

Using generalized impulse responses derived from a vector auto regression (VAR) model, Nath and Balderas (2008) examined the effects of remittances on inflation and the distribution of relative price changes in Mexico for the period 1980 to 2005. Their results show that remittances have little impact on inflation and relative price volatility throughout the entire period.

Using a sample consisting of 54 developing countries over the period 1995 to 2004, Narayan, Narayan, and Mishra (2011) analyzed the determinants of inflation based on the panel dynamic estimator developed by Manuel Arellano and Stephen Bond (1991) and the system GMM estimator by Arellano and Olympia Bover (1995). The results showed that remittances lead to an increase in inflation, and the effect

becomes more obvious in the long-run. Furthermore, openness, debt, current account deficits, the agricultural sector, and the short-term interest rate in the United States appeared to have a significant positive effect on inflation. An interesting result indicated that progress in democracy decreases inflation. However, this research was conducted using statistical data for a period of 10 years (1995-2004), and it pays no attention to the remittance inflows in the developing countries from Asia and the Pacific. In addition, this study does not go into an in-depth analysis of the causal effect between remittances and inflation during the research period.

Khan and Islam (2013) applied vector autoregressive (VAR) techniques to empirically analyze how remittance inflows affect the inflation rate in Bangladesh over the period 1972 to 2010. Their empirical results conclude that a 1% increase in remittance inflows causes the inflation rate to rise by around 2.48% in the long-run, whereas no significant relationship is observable between these two variables in the short-run.

By applying the cointegration technique developed by Søren Johansen (1988) and Johansen and Katarina Juselius (1990) over the period 1970-2010, Nisar and Tufail (2013) investigated the impact of remittances on inflation, including food inflation, footwear and textile inflation as well as housing and construction inflation in Pakistan. The results show that remittances have a positive impact on inflation and its different categories.

The study conducted by Termos, Naufal, and Genc (2013) investigated the impact of remittance outflows on inflation in the countries of the Gulf Cooperation Council (GCC). In their study, the authors applied three panel estimations techniques, including ordinary least squares (OLS), fixed effects (FE) and the Anderson-Hsiao (AH) estimator. The empirical analysis revealed that the remittance outflows reduce the inflation pressures in the GCC countries. Furthermore, their results show that remittance outflows in the analyzed countries play a stabilization role.

Using panel vector auto regression techniques and quarterly data for 21 emerging countries, Ball, Lopez, and Reyes (2013) examined the effect of remittance on inflation. Their theoretical model predicts that remittances temporarily increase the domestic money supply and inflation under a fixed exchange rate regime while temporarily generating no change in the money supply, decreasing the inflation and appreciating the real exchange rate under a flexible exchange rate regime.

Adnan Khurshid et al. (2016) used the System Generalized Method of Moments (SGMM) and bootstrap panel Granger causality approach to analyze the effect of remittances on inflation in 58 countries from low-income, lower-middle-income, and middle-income groups. The results of the SGMM approach show that remittances have a negative and statistically significant impact on inflation in low-income and lower-middle-income countries, while positively influencing it in the middle-income ones. Furthermore, remittances used for consumption and saving cause inflationary situations only in low-income and lower-middle-income groups. The bootstrap panel Granger test results show that remittances have a strong impact on the prices in lower-middle-income countries.

Salaheddin Abosedra and Ali Fakh (2017) have examined the impact of remittances and inflation in the case of Lebanon. The results indicated a long-run significant

rise in the prices of consumption items; however, on short-run, positive shocks to remittances lower the prices of maximum consuming items.

Sridhar Thapa and Sanjaya Acharya (2017) have carried out the research study in Nepal and concluded that it was a variation in different categories of consumption items; this showed that the rise in remittances had very important implication on relative prices.

Saghir Ghauri et al. (2019) investigate the effects of workers' remittances (WR) on long-term inflation in the case of Pakistan. The results of this research concluded a long-term association between remittances and general inflation (CPI and WPI) under a flexible exchange rate regime that shows that the long-term influence of remittances causes an inflationary effect in the economy when the type of change is included in the findings. The results of this study also concluded that workers' remittances cause the wholesale price index and the consumer price index because both the CPI and the WPI are the indicators of inflation, therefore, in the case of the Pakistani economy, remittances are responsible for increasing inflation in the country and the reason behind this inflation is the adverse use of these remittances.

Sbia and Hamdi (2020) investigated the impact of remittance outflows on inflation for a panel of 14 OPEC countries during the period 1980 to 2010. The empirical results of the bias-corrected least-squares dummy variable estimator reveal that remittance outflows have no effect on inflation rate, whereas trade openness and current account deficits have a positive impact. Additionally, the oil price appears to have no effect on inflation in the OPEC countries.

Unlike the results of most empirical studies, John Paulo R. Rivera and Tereso S. Tuallo Jr. (2020) argued that remittances were not necessarily inflationary in Philippines during January 2000 to October 2019 using a VAR model. Rivera and Tuallo Jr. (2020) found that the impact of any shock in remittances on inflation was absorbed in the short-run, implying that there is no relationship between remittances and inflation.

Syed Margub Elahi and Hasanur Rahman (2021) using data from 1976 to 2019 have estimate the nexus between remittance and inflation in Bangladesh. The results of the Augmented Dickey Fuller (ADF) unit root indicate that the variables are stationary at mixed order like as $I(0)$ and $I(1)$. Through the ADF test, this study conducts a dynamic autoregressive distributed lag (ARDL) model while considering the linear trend. The remittance has a significant and positive impact to raise inflation in the short-run but is insignificant in the long-run. The estimation found the speed of adjustment, error correction term (ECT) is 69% and bound testing criteria indicate the long-run association among the variable. This investigation also concludes that the exchange rate has a positive impact on inflation where the real exchange rate has no positive impact to raise inflation in Bangladesh.

Given the results from the foregoing studies, there seems to exist a research gap, and there is a room for more research with regard to the relationship between remittance inflows and inflation, especially in the case of the recipient countries from Central and Eastern Europe. Moreover, almost none of the past studies include countries from this region, especially countries that are not EU member states. The choice of statistical method is important in empirical analysis (Saban Nazlioglu 2011). The

abovementioned empirical studies are mostly country-specific and suffer from data and methodological limitations. This study constructed a new remittances series by adding “past household consumption resulting from the remittance inflow”, and “saving resulting from the remittance inflow worker remittances”, to overcome the data limitation.

Because of a significant number of parameters, limited observations and the potential endogeneity problem, the use of ordinary least squares (OLS), fixed and random effects are not suitable in this case. Therefore, the use of system generalized method of moment regression (SGMM) can be more useful in this situation. Also, the economic and social conditions in each economy are different. Basically, monetary and fiscal policy, exchange rate regime and the level of unemployment, productivity and remittances as a share of the economy are different. So, the effect of remittances on prices may vary from country to country. This study fills this gap using bootstrap panel Granger causality test along with cross-sectional dependency and the slope homogeneity approach.

This study makes a contribution to the existing literature by providing further evidence of a relationship between inflation and remittance. It is the first research that examines the causality between the remittances and inflation taking countries from Central and Eastern Europe.

2. Data and Variables

In order to determine the impact of remittances on inflation in Central and Eastern Europe, we construct a sample of 20 countries from this region - namely, Albania, Armenia, Bosnia and Herzegovina, Bulgaria, Belarus, Croatia, Czech Republic, Estonia, Hungary, Latvia, Lithuania, Montenegro, Macedonia, Moldova, Poland, Romania, Serbia, Slovakia, Slovenia and Ukraine - and employ a panel-regression analysis. Gangadharrao Soundalyarao Maddala and Shaowen Wu (1999) argues that one of the main advantages of panel data compared to other types of data is that the approach allows for testing and adjustment of the assumptions that are implicit in cross-sectional analyses. Additionally, Cheng Hsiao (2014) induces the following benefits of conducting a panel-regression analysis: (1) increasing degrees of freedom and reducing the problems of data multicollinearity; (2) constructing more realistic behavioral models and discriminating between competing economic hypotheses; (3) eliminating or reducing estimation bias; (4) obtaining more precise estimates of micro relations and generating more accurate micro predictions; (5) providing information on the appropriate level of aggregation; and (6) simplifying cross-sections or time series data inferential procedures.

The selection of countries is mainly based on similarities in terms of historical and socio-economic developments but also in the geographical and cultural familiarity between the sampled countries. On the other hand, there are also differences among countries that make them collectively a quite heterogeneous group, which mostly reflect through the high disparities observed with respect to the level of public debt, GDP growth, GDP *per capita* growth, EU membership etc. Now that the economic and financial development considerably varied across the sampled countries and that some of them have become EU member states at various points of the analysed period, we

find it highly convenient to use the EU membership as a rationale to divide the sample into two subsamples. The first is a group of EU member states (EU-11), i.e. countries that have acceded to the European Union during the analysed period, and it includes Bulgaria, Croatia, Czech Republic, Estonia, Hungary, Latvia, Lithuania, Poland, Romania, Slovakia and Slovenia. The second is a group of non-EU countries (NEU-9), i.e. countries that have not been part of the European Union throughout the entire period, and it includes Albania, Armenia, Belarus, Bosnia and Herzegovina, Macedonia, Moldova, Montenegro, Serbia and Ukraine. We note that the data series for Serbia and Montenegro are incomplete because they were part of a single country until 2006.

The variables that choose for the empirical model are in line with the related literature, such as Nath and Balderas (2008), Khurshid et al. (2016) and Sbia and Hamdi (2020). We use the personal remittance inflow as a measure of remittances; the consumer price index as a measure of inflation (the inflation rate is taken as a more convenient measure for the descriptive statistics and the study of the time evolution); and the annual GDP growth rate, foreign direct investment net outflow, gross national expenditure, gross domestic savings, household final consumption expenditure and trade as control variables. The data for the selected variables were obtained from World Bank's World Development Indicators (WDI) database. Table 1 presents the variables in the model in greater detail.

Table 1 Definition of Variables

| Variable | Abbreviation | Unit | Source |
|---|--------------|--------------------|------------------------------|
| Remittance inflow | REM | per cent of GDP | World Development Indicators |
| Consumer price index | CPI | index (2010 = 100) | World Development Indicators |
| Inflation | INF | per cent | World Development Indicators |
| Annual GDP growth rate | GDPG | per cent | World Development Indicators |
| Foreign direct investment net outflow | FDI | per cent of GDP | World Development Indicators |
| Gross national expenditure | GNE | per cent of GDP | World Development Indicators |
| Gross domestic savings | GDS | per cent of GDP | World Development Indicators |
| Household final consumption expenditure | HHFC | per cent of GDP | World Development Indicators |
| Trade | TRD | per cent of GDP | World Development Indicators |

Notes: Consumer price index is used in the econometric model, while inflation is used in the descriptive statistics.

Source: Authors' calculations.

3. Descriptive Statistics and Trends

In this section, we present the descriptive statistics for all countries and the two country groups, and we additionally discuss the main trends in the evolution of the selected variables over time.

The summary statistics are reported in Table 2. Noticeable differences between the EU member states and the non-EU countries can be observed with the respect to the remittance inflow. Namely, the average remittance inflow in the NEU-9 group accounts for 10.2% of GDP, whereas this share for the EU-11 group is only 1.8% of GDP over the entire period. Bosnia and Herzegovina has recorded the highest value of 48.2% of GDP in 1998, while Belarus had the lowest value of only 0.04% of GDP in 1994. Of the countries that joined the EU, Bulgaria received the maximum remittance inflow of 8.1% of GDP in 2003. The EU member states countries average higher inflation rate of 43.2% against that of 17.9% for the non-EU countries. Countries from both groups have experienced hyperinflation in the second half of the 1990s, which is

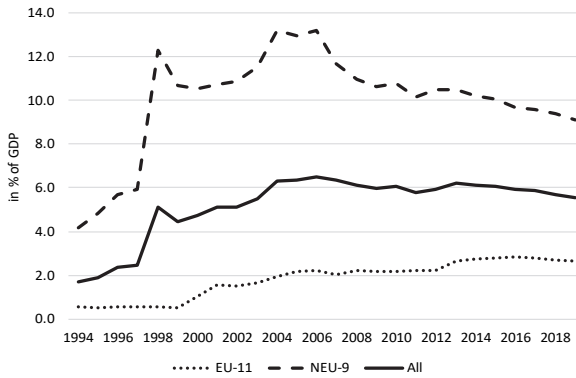
the primary factor for such high mean values. As for the annual GDP growth rate, both country groups have a mean growth rate of 3.3%. It is important to note that the volatility of the GDP growth rate has been larger in the group of non-EU countries. For instance, Moldova had a large slump of GDP by 30.9% in 1994, while Belarus experienced a GDP growth of 22.9% in 1997. The FDI net outflow is similar across country groups with a mean of 4.9% of GDP for NEU-9 and 4.4% of GDP for EU-11. The NEU-9 countries have somewhat higher gross national expenditure on average, although in both groups it exceeds the amount of GDP. Furthermore, the NEU-9 countries also have higher household final consumption with an average of 75.5% of GDP against the mean value of 58.6% in the EU-11 countries, whereas the EU-11 group has three times higher gross domestic savings. Finally, the EU member states have greater trade openness with a mean share of the trade to GDP of 110.7%, while the mean share for the non-EU countries is 94.1%. The last conclusion is not surprising at all given the trade liberalisation resulting from the accession to the European Union.

Table 2 Descriptive Statistics

| Country group | Measure | Variable | | | | | | | |
|---------------|----------|----------|---------|-------|-------|-------|-------|-------|-------|
| | | REM | INF | GDPG | FDI | GNE | GDS | HHFC | TRD |
| NEU-9 | Mean | 10.2 | 17.9 | 3.3 | 4.9 | 117.8 | 7.2 | 75.5 | 94.1 |
| | Median | 9.9 | 5.2 | 3.6 | 3.7 | 117.9 | 6.3 | 76.3 | 94.9 |
| | St. dev. | 8.3 | 69.8 | 5.9 | 4.4 | 12.1 | 12.2 | 12.7 | 25.7 |
| | Min. | 0.0 | -1.6 | -30.9 | -0.4 | 94.5 | -17.5 | 48.1 | 13.4 |
| | Max. | 48.2 | 891.2 | 22.9 | 37.3 | 153.3 | 38.4 | 106.1 | 158.0 |
| | Obs. | 202 | 224 | 219 | 204 | 215 | 216 | 216 | 226 |
| EU-11 | Mean | 1.8 | 43.2 | 3.3 | 4.4 | 102.4 | 22.4 | 58.6 | 110.7 |
| | Median | 1.4 | 3.4 | 3.8 | 3.3 | 101.7 | 22.4 | 59.0 | 106.9 |
| | St. dev. | 1.6 | 350.1 | 4.0 | 7.0 | 6.0 | 5.8 | 6.2 | 34.1 |
| | Min. | 0.0 | -1.6 | -14.8 | -40.4 | 87.3 | 8.8 | 46.1 | 43.7 |
| | Max. | 8.1 | 5,273.4 | 13.0 | 54.2 | 120.7 | 34.8 | 77.5 | 190.5 |
| | Obs. | 286 | 279 | 282 | 285 | 282 | 282 | 283 | 282 |
| All | Mean | 5.3 | 31.9 | 3.3 | 4.6 | 109.0 | 15.8 | 66.0 | 103.3 |
| | Median | 2.5 | 3.8 | 3.7 | 3.5 | 105.7 | 18.7 | 62.8 | 99.3 |
| | St. dev. | 6.8 | 265.0 | 5.0 | 6.1 | 11.9 | 11.9 | 12.7 | 31.7 |
| | Min. | 0.0 | -1.6 | -30.9 | -40.4 | 87.3 | -17.5 | 46.1 | 13.4 |
| | Max. | 48.2 | 5,273.4 | 22.9 | 54.2 | 153.3 | 38.4 | 106.1 | 190.5 |
| | Obs. | 202 | 503 | 501 | 204 | 215 | 216 | 216 | 226 |

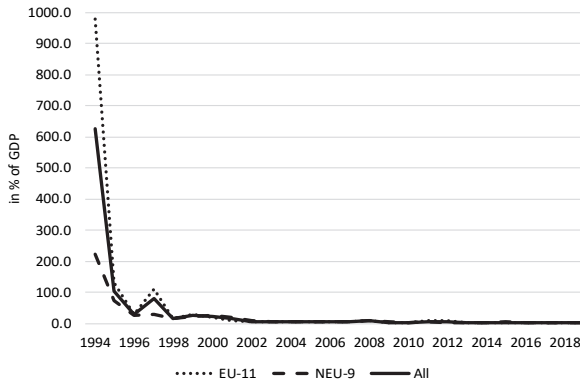
Source: Authors' calculations.

The time evolution of the variables is depicted on Figures 1-8. In general, the trends are very similar across country groups for all variables, although there are some differences that need to be pointed out. Firstly, the remittance inflow for the NEU-9 group has experienced two sudden pick-ups - the first one in 1998 and the second one in the mid-2000s - and has been decreasing in the 2010s. On the other hand, the EU-11 group records gradual increase over time with fairly constant levels during the 2010s. Secondly, the trend of the FDI net outflow for both groups have drastically changed after the global crisis of the late 2000s. Namely, the GDP growth rate of the non-EU countries has been more stable than the one of the EU member states experiencing frequent ups and downs. Thirdly, the trade openness of both groups was evidently at the same level until 2004 when the trade of the EU-11 group started to grow rapidly and created a substantial gap with the NEU-9 group. This trend is not something unexpected given that the period coincides with the first wave of accession to the European Union, meaning that the EU member states began to reap the benefits regarding the trade liberalisation from their EU membership thereafter.



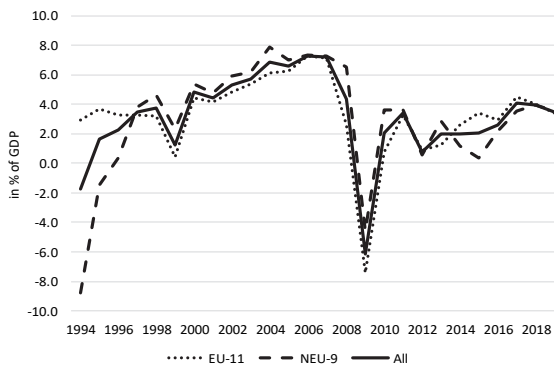
Source: Authors' calculations.

Figure 1 Average Remittance Inflow over Time



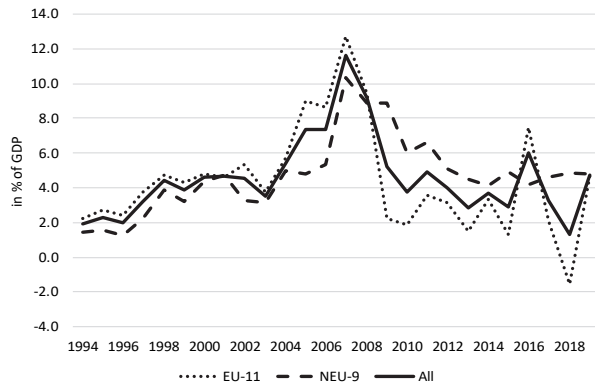
Source: Authors' calculations.

Figure 2 Average Inflation Rate over Time



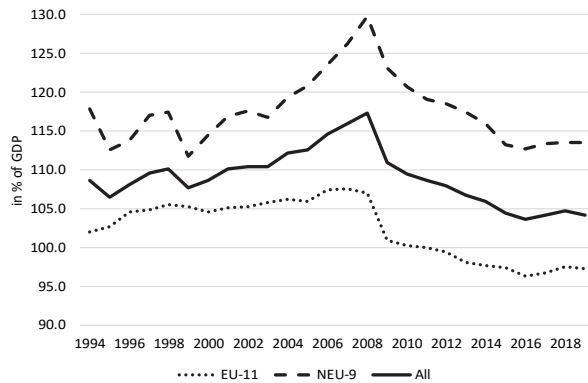
Source: Authors' calculations.

Figure 3 Average Annual GDP Growth Rate over Time



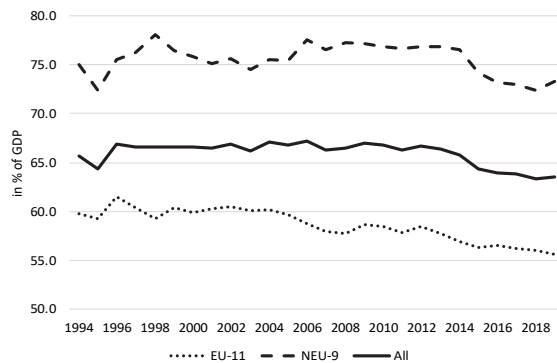
Source: Authors' calculations.

Figure 4 Average FDI Net Outflow over Time



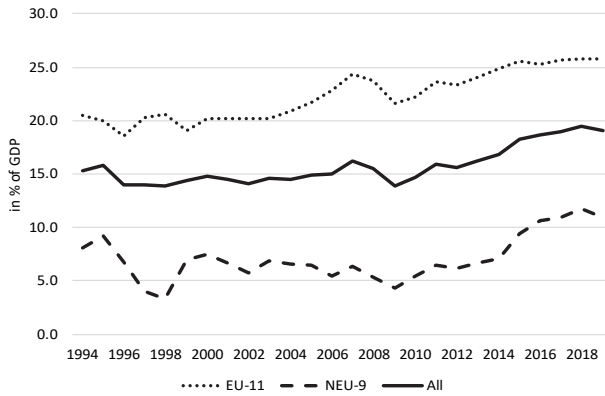
Source: Authors' calculations.

Figure 5 Average Gross National Expenditure over Time



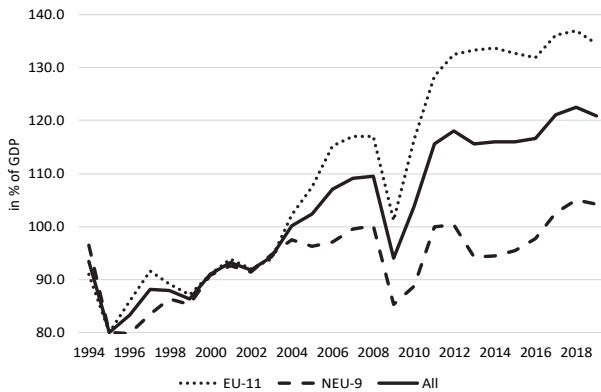
Source: Authors' calculations.

Figure 6 Average Gross Domestic Savings over Time



Source: Authors' calculations.

Figure 7 Average Household Final Consumption Expenditure over Time



Source: Authors' calculations.

Figure 8 Average Trade over Time

4. Methodology

This section explains the methodology used to empirically study the effect of remittances on inflation and we divide it into two parts. In the first part, we inspect the impact of remittances on inflation in each group. In the second part, we estimate the causal relation between remittances and inflation in each group while also assessing the relation across individual economies.

4.1 Group Effect Using System General Method of Moments-SGMM

As noted in earlier studies, the process of estimation encounters the problems of heterogeneity and endogeneity, which produce inconsistent and biased estimates with the pooled ordinary least squares (OLS) estimator (Cathrine Pattillo, Helene Poirson,

and Luca Ricci 2002; Manmohan S. Kumar and Jaejoon Woo 2010). Namely, the regression model applying pooled OLS fails to account for the unobserved country-specific effects that vary across countries. Thereby, the result may be affected by an omitted variable bias (Pattillo, Poirson, and Ricci 2002) and the analysis continues with the evaluation of the models with fixed (FEM) and random effects (REM). These econometric models control the heterogeneity in the sample and take into account the stationary FEM effects or specific modelled REM effects. However, the presence of a fixed effects panel estimation is likely to impose a correlation between the lagged endogenous variable and the residuals, thus rendering the results of the coefficient of the lagged initial level of CPI negatively biased (Pattillo, Poirson, and Ricci 2002). As a result, the use of OLS, FEM and REM is not suitable in this case.

In order to account for the possibility of the endogeneity issue to influence the debt variable, we employ the instrumental variable (IV) estimation technique proposed by Anja Baum, Marcos Poplawski-Ribeiro, and Anke Weber (2012). In particular, the estimator used in our research is the System General Method of Moments (SGMM) developed by Arellano and Bond (1991). By applying this method, we assume that all the control variables are predetermined or endogenous. In this context, we follow Khurshid et al. (2016) and Sun Qiang et al. (2019) in adding one more variable - that is, age dependency ratio calculated as the share of young people of the working-age population - as an exogenous instrument in the regression equations, while the other variables are treated as predetermined or endogenous. We deal with the potential problem of having too many instruments compared to the number of groups David Roodman (2009) by keeping the number of instruments lower than the number of countries. In the standard un-collapsed form, each instrumental variable creates one instrument for each time period and the lag attributable to that period; in the collapsed form, a single column vector of instruments is created instead of a whole matrix. Although collapsing can reduce the statistical efficiency in large samples, it can be a very helpful tool in avoiding the bias in finite samples, which are usually characterised by instrument proliferation. In other words, we control the number of instruments by limiting our analysis to two lags. The latter helps to avoid any bias due to the large number of instruments in a relatively small sample. The validity of the instruments selected can be tested using the Sargan test. In addition, we test the serial correlation in the residuals differentiated once [AR(1)] and twice [AR(2)]. According to Arellano and Bond (1991), the first-order autocorrelation in the differentiated residuals does not imply that the estimates are inconsistent but the second-order autocorrelation would imply that this is the case.

To estimate the impact of remittances on inflation, we follow Khurshid et al. (2016) and include two interaction terms with regards to CPI and add several other variables:

$$CPI_{i,t} = \alpha_0 + \alpha_1 CPI_{i,t-1} + \alpha_2 REM_{i,t} + \alpha_3 (REM \times HHCE)_{i,t-1} + \alpha_4 (REM \times GS)_{i,t} + \alpha_5 X_{i,t} + \varepsilon_{i,t}, \quad (1)$$

where $CPI_{i,t-1}$ is the initial consumer price index, $REM_{i,t}$ denotes the remittance inflow, $(REM \times HHCE)_{i,t-1}$ is the past household consumption resulting from the remittance inflow, $(REM \times GS)_{i,t}$ represents the saving resulting from the remittance

inflow, $X_{i,t}$ is a matrix comprising of the other explanatory variables - annual GDP growth, FDI net outflow, trade openness and final consumption expenditure - and $\varepsilon_{i,t}$ is the error term. As already mentioned before, we use the age dependency ratio as an exogenous instrument in the regression equations. The estimation results of the equation given in (1) using the SGMM test are shown in Table 3.

4.2 Testing Cross-Sectional Dependence

Before we move on to testing the causality in a panel framework suggested by Elena-Ivona Dumitrescu and Christophe Hurlin (2012), we first check the possible cross-sectional dependence across countries and subsequently apply the panel unit root test as per the procedure proposed by Mehmed Bölükbaş, Mehmet Topal, and Hakan Hotunluoğlu (2018). In fact, we have witnessed significant cross-border movement of workers, financial integration and international trade in the past decades so it is reasonable to assume that a shock affecting one country can also affect the others in the panel. M. Hashem Pesaran (2006) indicates that ignoring the cross-section dependence - which implies that a shock that affects any of the units that make up the panel can affect other units as well - can lead to biased results. Taking this into account, it is important to see how the slope coefficients are treated - as homogeneous or heterogeneous. According to Clive W. J. Granger (2003), the causality running from one variable to another by imposing the joint restriction on the panel is the strong null hypothesis. Moreover, the homogeneity assumption for the parameter is unable to capture the heterogeneity because of the country-specific characteristics Breitung Jörg and Samarjit Das (2005).

In the light of the foregoing elaboration and for the purpose of examining the cross-section dependence, we conduct the following three tests: the LM test, Trevor S. Breusch and Adrian R. Pagan (1980), the CD test, Pesaran (2004) CD test and the bias-adjusted LM test, Pesaran, Ulaláh Aman, and Yamagata Takashi (2008).

To check for the presence of cross-sectional dependence, Breusch and Pagan (1980) proposed the Lagrange multiplier (LM) test. The technique of computing the LM test requires the estimation of the following model:

$$y_{i,t} = \alpha_i + \beta_i x_{i,t} + \varepsilon_{i,t} \text{ for } i = 1, \dots, N, t = 1, \dots, T, \tag{2}$$

where i denotes the cross-section dimension, t is the time dimension, $x_{i,t}$ is a $k \times 1$ vector of the explanatory variables, α_i is the intercept and β_i is the slope coefficient. The null hypothesis assumes the absence of cross-sectional dependence, while the alternative hypothesis assumes its presence. Using mathematical notation, they can be described as:

$$H_0: cov(u_{it}, u_{it}) = 0 \text{ for all } t \text{ and } i \neq j, \tag{3}$$

$$H_1: cov(u_{it}, u_{it}) = 0 \text{ for at least one pair of } i \neq j. \tag{4}$$

To test the null against the alternative hypothesis of cross-sectional dependence, Breusch and Pagan (1980) defined the LM-test statistic as:

$$LM = T \sum_{i=1}^{N-1} \sum_{j=i+1}^N \hat{p}_{ij}^2, \tag{5}$$

where $\hat{\rho}_{ij}^2$ represents the sample estimate of pairwise correlation from the OLS estimation of Equation (2) for each i and the LM-test statistic is asymptotically chi-square distributed with $N(N - 1)/2$ degrees of freedom under the null hypothesis. The LM test is valid with relatively small N and comparatively large T . To solve the shortcomings of the LM test, Pesaran (2004) proposed a scaled version of the statistic that takes the form:

$$CD_{LM} = \sqrt{\frac{N}{N(N-1)}} T \sum_{i=1}^{N-1} \sum_{j=i+1}^N (T \hat{\rho}_{ij}^2 - 1), \quad (6)$$

for which the null hypothesis assumes standard normal distribution when $N \rightarrow \infty$ and $T \rightarrow \infty$. This extension of the test is applicable for large N and T but it exhibits size distortions when N is large and T is small. To overcome this problem, Pesaran (2004) proposed the calculation of the CD-test statistic as:

$$CD = \sqrt{\frac{2T}{N(N-1)}} \sum_{i=1}^{N-1} \sum_{j=i+1}^N \hat{\rho}_{ij}^2, \quad (7)$$

for which the null hypothesis assumes asymptotic standard normal distribution for any value of N and T .

4.3 Testing Non-Stationarity

The next step in our research is to apply the panel unit root test proposed by Kyung So Im, Pesaran, and Yongcheol Shin (2003) as well as the Fischer-type ADF test and the PP test as suggested by Maddala and Wu (1999). These tests allow for deterministic and dynamic effects differing across the countries included in the panel. According to Badi Baltagi (2001), the Fisher test has more advantages because of the following reasons: (1) the cross-sectional dimension can be either finite or infinite; (2) each group can have non-stochastic and stochastic components; and (3) the time-series dimension can vary for each cross-section. Another advantage of the Fisher test is that, unlike the IPS test, it does not require a balanced panel and it allows for the use of different lag lengths in the individual ADF regression. In our study, we prefer the Fisher-type test but we also report the results of the IPS tests to provide an additional robustness check.

4.4 Testing Non-Granger Causality

The causality between variables is examined at both panel and country level by applying the panel causality test suggested by Dumitrescu and Hurlin (2012). In fact, the test is an advanced version of the causality test introduced by Granger (1969) that can be applied to heterogeneous panels with or without cross-sectional dependence and it may be used in both cases when $T > N$ or $N > T$. The test uses two separate HNC distributions - asymptotic and semi-asymptotic. The former is used when $T > N$ and the latter when $N > T$. In this causality test, three separate statistics are calculated under the following panel data model:

$$y_{i,t} = \sum_{k=1}^K \gamma_i^{(k)} y_{i,t-k} + \sum_{k=1}^K \beta_i^{(k)} x_{i,t-k} + \varepsilon_{i,t}, \quad (8)$$

where K indicates the lag length, $\gamma_i^{(k)}$ is the autoregressive coefficient and $\beta_i^{(k)}$ is the regression coefficient. It is assumed that the two parameters are constant over time but they may vary with respect to units. The null hypothesis assumes that there is no Granger-causality from x_i to y_i in all cross-sections, while the alternative hypothesis assumes that Granger-causality from x_i to y_i exists in at least one cross-section. The hypotheses of the test can mathematically be expressed as:

$$H_0: \beta_i = 0 \text{ for } \forall i = 1, \dots, N \text{ with } \beta_i = \beta_i^{(1)}, \dots, \beta_i^{(k)}, \tag{9}$$

$$H_1: \beta_i \neq 0 \text{ for } \forall i = 1, \dots, N \text{ with } \beta_i \neq 0 \text{ for } \forall i = N_1 + 1, \dots, N. \tag{10}$$

The statistic used to test the hypotheses is calculated as:

$$W_{N,T}^{HNC} = \frac{1}{N} \sum_{i=1}^N (T - 2K - 1) \underbrace{\left(\frac{\tilde{\varepsilon}_i' \Phi_i \tilde{\varepsilon}_i}{\tilde{\varepsilon}_i' M_i \tilde{\varepsilon}_i} \right)}_{W_{i,t}}, i = 1, \dots, N, \tag{11}$$

where $W_{i,t}$ is the mean Wald statistic calculated for the dimension t of the cross-sections. Although the individual Wald statistics approximate towards a chi-square distribution with K degrees of freedom, the authors state that the statistics converge to a standard normal distribution when $N \rightarrow \infty$ or when $T \rightarrow \infty$. The asymptotic statistic $Z_{N,T}^{HNC}$ and the semi-asymptotic statistic Z_N^{HNC} are generated using $W_{N,T}^{HNC}$ in the following expressions:

$$Z_{N,T}^{HNC} = \sqrt{\frac{N}{2K}} (W_{N,T}^{HNC} - K)_{T,N \rightarrow \infty} \xrightarrow{d} N(0,1) \tag{12}$$

$$Z_N^{HNC} = \frac{\sqrt{N} [W_{N,T}^{HNC} - 1/N \sum_{i=1}^N E(W_{i,T})]}{\sqrt{1/N \sum_{i=1}^N \text{var}(W_{i,T})}} \xrightarrow{d}_{N \rightarrow \infty} N(0,1). \tag{13}$$

After setting up the methodology, we start our empirical work with testing for cross-sectional dependence and the homogeneity of the slope across countries. Based on the outcomes of the tests, our intent is to decide which causality method should be employed to identify the direction of the causality relation between remittances and inflation. To test the causal relationship, we select all countries from the panel.

5. Results

The results from the empirical analysis using the methodology explained in the previous section are presented step by step hereafter.

5.1 SGMM Results

All regression coefficients representing the relationship among the variables are shown in Table 3. The main finding is the impact of remittances on inflation. As expected, the results signify a positive statistically significant relationship between remittance inflows and inflation for the NEU-9 group, while the direction of the relationship is negative for the NMS-11 group and for the entire sample. These findings confirm that

remittance inflows create an upward pressure on inflation in the NEU-9 group. The flow of remittances helps in reducing the financial constraints and it meets the credit needs of the financial market. According to the impossible trinity theory, the countries need to sacrifice an independent monetary policy for free capital flows, including remittance inflows. Thereby, the growth of remittance inflows leads to higher complexity for the monetary policy in stabilising both the exchange rate and inflation. Furthermore, this result provides a significant empirical evidence for these countries in their efforts to control the inflation in the context of an upward trend in remittance inflows. Luis René Cáceres and Nolvía Nery Saca (2006) argue that remittances increase consumption patterns with no increase in output growth as they boost commodity prices in the recipient economy. As a stable source, remittances positively contribute to the accumulation of foreign reserves, therefore causing a surplus in the balance of payment, and any failure to sterilise the growth of foreign reserves will result in a wider monetary base. As a result, Matteo Bugamelli and Franchesko Paternò (2009) opine that the prices will increase. On the other hand, the negative relationship for the NMS-11 countries can be due to the possibility to use remittances for small-scale production that increases the output and pushes the inflation down Javed Iqbal, Nosheen Misbah, and Ammara Javed (2013).

The results also suggest that ongoing inflation levels have a significantly positive relationship with past inflation levels, which reflects the existence of inertial inflation. Moreover, a relatively high inflation rate in the past leads to higher inflation equilibrium by making disinflation more expensive for backward-looking inflation expectations Carlo Cotarelli (1998)

The past consumption has a positive and significant effect on the future prices in the NEU-9 countries, while the results are not significant for the NMS-11 countries. Furthermore, the results for savings based on remittance inflow show that they are statistically significant for the NMS-11 countries. The results of all samples show that these determinants have a statistically significant and positive sign. This result is not surprising at all because the limited production capabilities in the NEU-9 countries incentivises a major portion of remittances to be used for consumption, thus affecting the tradable sector and increasing the domestic prices and finally leading to higher inflation.

The results for the GDP growth rate indicate to a strong statistical significance with a negative sign in all three models. This result is consistent with Mihir Desai et al. (2003), who revealed a negative relationship between output growth and inflation for a panel of 100 countries. The same result was found by Ari Aisen and Francisco Viegá (2006), who explored the same relationship for a panel of 75 developing countries; Narayan, Narayan, and Mishra (2011), who confirmed a negative effect of the GDP growth rate on the inflation rate; and Sbia and Hamdi (2020).

The trade openness has a positive and significant effect only when we include all countries. This finding is in line with the cost-push hypothesis, according to which, trade openness certainly does not decrease inflation but increases it. In other words, there is a positive effect of trade openness on inflation (Laura Alfaro et al. 2004). However, the empirical literature on the relationship between trade openness and inflation is inconclusive. Namely, according to the spill-over hypothesis, trade

openness is associated with falling prices and therefore protectionism can be inflationary William C. Gruben and Darryl McLeod (2002).

The government expenditure is statistically significant in two of the specifications - in the one with the NMS-11 countries and in the entire sample. The sign is positive as expected and it can be attributed to the governments' aim to stimulate economic growth through government expenditure. This generates higher inflation and government budget deficits. The budget deficit of the government is financed either by borrowing from domestic and foreign sources or by directing the central bank to increase the money supply by issuing money. According to Sulaiman D. Mohammad et al. (2009), the deficit financed by the government has liquidity effects, which can lead to a rise in the aggregate demand and it may generate inflationary pressure in the economy.

Finally, the results of the Sargan test confirm the validity of our instruments and the presence of autocorrelation. The AR(2) test exhibits no second-order serial correlation in the specified models.

Table 3 SGMM Results

| Variable | Country group | | |
|------------------------------------|----------------------|----------------------|-----------------------|
| | NEU-9 | EU-11 | All |
| CPI(-1) | 1.061*** (0.013) | 0.916*** (0.012) | 0.870 *** (0.014) |
| REM | 0.590*** (0.231) | -1.391*** (0.621) | -0.239* (0.211) |
| GDPG | -0.319*** (0.100) | -0.199*** (0.052) | -0.255 *** (0.049) |
| GNE | 0.122 (0.086) | 0.127*** (0.058) | 0.258** (0.144) |
| FDI | -0.127 (0.139) | 0.021 (0.026) | -0.045 (0.038) |
| TRD | 0.029 (0.028) | 0.020 (0.014) | 0.159*** (0.028) |
| REM×GDS | 0.007 (0.028) | -0.001*** (0.004) | 0.035*** (0.010) |
| REM×HHFC(-1) | 0.005*** (0.005) | -0.002 (0.004) | 0.002** (0.001) |
| Constant | -18.01* (10.82) | -0.519 (6.784) | -29.71*** (17.48) |
| Test | | | |
| Sargan test (p-value) | 0.258 | 0.432 | 0.195 |
| H_0 : The instruments are valid. | 0.002 | 0.019 | 0.000 |
| Arellano-Bond test [AR (1)] | 0.548 | 0.973 | 0.470 |
| Arellano-Bond test [AR (2)] | | | |

Notes: The symbols ***, ** and * denote statistical significance at the level of 1, 5 and 10%, respectively.

Source: Authors' calculations.

5.2 Cross-Sectional Dependence, Stationarity and Panel Causality Results

The results from the cross-sectional dependence test are reported in Table 4. Since the p -values are less than 0.01, we reject the null hypothesis of no cross-sectional dependence at significance level of 1% for all models and conclude that there is cross-sectional dependence between the variables. These findings imply that a shock occurring in one country can be transmitted to other countries in the sample.

Table 4 Cross-Sectional Dependence Results

| Test | Country group | | | | | |
|------------------------|---------------|----------|----------|----------|------------|------------|
| | NEU-9 | | EU-11 | | All | |
| | REM | CPI | REM | CPI | REM | CPI |
| Breusch-Pagan LM test | 230.58*** | 258.4*** | 240.4*** | 249.6*** | 1,100.2*** | 2,248.1*** |
| Pesaran scaled LM test | 26.01*** | 29.72*** | 16.59*** | 17.51*** | 45.66*** | 104.5*** |
| Pesaran CD test | 9.473*** | 11.59*** | 2.724*** | 1.939*** | 11.12*** | 38.81*** |

Notes: The symbols ***, ** and * denote statistical significance at the level of 1, 5 and 10%, respectively.

Source: Authors' calculations.

Next, we continue with the results of the panel unit root tests, which are shown in Table 5. These tests are conducted at level and first differences for all variables in the model. The presence of unit root has been confirmed in all time series using the IPS and ADF tests. Furthermore, the panel unit roots tests for PP support the hypothesis of a unit root in all variables across countries, except for the consumer price index in all three country groups as well as the hypothesis of a zero-order integration at the first differences. However, following the traditional null hypothesis of stationarity, the results consistently accept stationarity at first difference and reject stationarity at levels indicating that all series are $I(1)$.

Table 5 Cross-Sectional Dependence Results

| Variable | Country group | | | | | | | | |
|--------------|---------------|----------|----------|-----------|----------|----------|-----------|----------|----------|
| | NEU-9 | | | EU-11 | | | All | | |
| | IPS test | ADF test | PP test | IPS test | ADF test | PP test | IPS test | ADF test | PP test |
| | 1.538 | 23.44 | 35.34*** | -0.949 | 26.39 | 62.46*** | 0.951 | 42.56 | 123.1*** |
| CPI | -7.665*** | 84.36*** | 83.16*** | -4.694*** | 62.05*** | 92.10*** | -6.022*** | 110.2*** | 147.1*** |
| D(CPI) | -0.416 | 16.86 | 19.04 | -2.688 | 39.58 | 29.85 | -2.963 | 69.30 | 48.89 |
| FDI | -10.96*** | 125.1*** | 125.9*** | -10.52*** | 139.5*** | 168.4*** | -12.08*** | 214.1*** | 294.4*** |
| D(FDI) | -2.356 | 17.34 | 16.25 | -1.283 | 15.38 | 15.17 | -2.936 | 34.61 | 33.28 |
| GDPG | -7.484*** | 84.75*** | 84.40*** | -5.394*** | 69.29*** | 80.14*** | -12.13*** | 303.2*** | 164.5*** |
| D(GDPG) | -1.162 | 21.94 | 22.29 | 0.924 | 12.80 | 12.85 | -0.659 | 43.85 | 45.14 |
| GNE | -11.56*** | 134.4*** | 167.1*** | -9.151*** | 119.9*** | 164.7*** | -12.31*** | 216.1*** | 331.7*** |
| D(GNE) | -1.783 | 22.59 | 22.19 | 0.979 | 13.74 | 16.67 | -0.144 | 44.99 | 42.41 |
| REM | -4.247*** | 60.17*** | 65.74*** | -4.649*** | 60.59*** | 118.5*** | -9.551*** | 170.1*** | 228.8*** |
| D(REM) | -1.182 | 28.44 | 27.75 | 1.271 | 12.56 | 16.20 | 0.154 | 44.33 | 44.75 |
| TRDE D(TRDE) | -12.27*** | 144.1*** | 200.5*** | -8.849*** | 114.8*** | 205.2*** | -12.96*** | 229.4*** | 205.8*** |

Notes: The symbols ***, ** and * denote statistical significance at the level of 1, 5 and 10%, respectively.

Source: Authors' calculations.

The results of the panel Granger-causality test suggested by Dumitrescu and Hurlin (2012) are shown in Table 6. We note that only the values of the asymptotic statistic $Z_{N,T}^{HNC}$ are reported because $T = 26 > N = 20$. According to the test results, the null hypothesis assuming no Granger-causality between remittances and inflation is rejected at the significance level of 1% for the entire sample. In both cases for the subsampled country groups, the null hypothesis is not rejected and only the remittances have impact on inflation but not *vice versa*.

The country-specific Wald statistics were calculated in order to determine which hypothesis is valid in each of the selected countries. A summary of the test results is presented in Table 7. It can be inferred that the results of both tests are correlative. This finding can be regarded as an important criterion for the reliability of the results.

Table 6 Dumitrescu-Hurlin Panel Granger-Causality Test Results

| Direction | Country group | | |
|-----------|----------------------|----------------------|----------------------|
| | NEU-9 | EU-11 | All |
| CPI → REM | 0.596 -0.856 | 0.983 1.652 | 1.761*** 2.407*** |
| REM → CPI | 5.415*** 9.365*** | 4.765*** 7.432*** | 3.723*** 8.612*** |

Notes: The symbols ***, ** and * denote statistical significance at the level of 1, 5 and 10%, respectively.

Source: Authors' calculations.

Table 7 Panel Granger-Causality Results across Countries

| Countries | Direction | | | |
|------------------------|-----------|-------|-----------|-------|
| | CPI → REM | | REM → CPI | |
| | W-stat. | Prob. | W-stat. | Prob. |
| Albania | 2.579 | 0.122 | 11.650 | 0.002 |
| Armenia | 0.265 | 0.611 | 0.206 | 0.653 |
| Bosnia and Herzegovina | 0.036 | 0.850 | 0.004 | 0.944 |
| Bulgaria | 0.046 | 0.831 | 1.952 | 0.176 |
| Belarus | 0.083 | 0.775 | 5.375 | 0.030 |
| Croatia | 0.828 | 0.372 | 1.448 | 0.241 |
| Czech Republic | 0.896 | 0.353 | 3.474 | 0.075 |
| Estonia | 5.296 | 0.031 | 0.361 | 0.553 |
| Hungary | 4.607 | 0.431 | 4.787 | 0.039 |
| Latvia | 4.981 | 0.036 | 0.005 | 0.981 |
| Lithuania | 4.220 | 0.530 | 3.476 | 0.075 |
| Montenegro | 1.286 | 0.268 | 6.349 | 0.019 |
| Macedonia | 0.642 | 0.431 | 3.475 | 0.075 |
| Moldova | 0.035 | 0.851 | 16.530 | 0.005 |
| Poland | 0.084 | 0.773 | 0.021 | 0.883 |
| Romania | 4.602 | 0.432 | 3.182 | 0.088 |
| Serbia | 0.568 | 0.458 | 2.048 | 0.016 |
| Slovakia | 0.212 | 0.649 | 4.527 | 0.044 |
| Slovenia | 3.943 | 0.596 | 5.547 | 0.027 |
| Ukraine | 0.007 | 0.933 | 0.038 | 0.847 |

Source: Authors' calculations.

The results indicate that there is no bidirectional causality between remittances and inflation in the selected countries. Nonetheless, inflation is only causing remittances in Estonia and Latvia, whereas remittances positively impact inflation in Albania, Belarus, Czech Republic, Hungary, Lithuania, Montenegro, Macedonia, Moldova, Romania, Serbia, Slovakia and Slovenia. In the other countries - namely, Armenia, Bosnia and Herzegovina, Croatia, Poland and Ukraine - there is no impact of either inflation or remittances on the other variable. In sum, remittances are an important determinant of inflation in many countries but the results do not support this assumption universally. Therefore, we can cautiously say that the relationship between remittances and inflation varies from one to another country.

6. Conclusion

Remittances and inflation affect the economic activity of the recipient's economy and are of great importance for developing countries. The remittance inflow accelerates economic activity by increasing the personal income, improving the living standards and ultimately enhancing the aggregate demand for goods and services, thus exerting upward pressure on prices.

Our investigation of the relationship between remittances and inflation for a sample of 20 countries from Central and Eastern Europe and two subsamples consisting of EU member states (EU-11) and non-EU countries (NEU-9) for the period 1994-2019 using a SGMM estimation technique points out to a positive relationship between remittance inflow and inflation, with the impact being statistically significant for the countries that are EU member states and negative for the non-EU countries and the entire sample. These results confirm that remittance inflow creates an upward pressure on inflation in the EU member states. Such differences could be explained by the fact that remittances are mostly used for food consumption in the less developed countries and they therefore contribute to the health status of recipient households but uplift the prices in the recipient economy. To ensure price stability, governments must take serious policy measures regarding bumper stock of staple food and it is clear that additional steps to boost the supply of agricultural products and productivity are essential for the GDP growth.

As for the other tested variables, the results are in line with the previous empirical literature. Ongoing inflation rates have positive statistically significant relationship with past inflation, which reflects the existence of inertial inflation. Past consumption resulting from remittance inflow has a positive statistically significant effect on future prices in the non-EU countries, while the results are not statistically significant for the EU member states. Levels of saving based on remittance inflow show that statistically significant relationship in the EU member states. The results for the GDP growth are strongly statistically significant with a negative sign in all three models, whereas the result for trade openness shows that this determinant has a positive and statistically significant effect only for the entire sample. The government expenditure is positive statistically significant in only two specifications - that is, the one for the EU member states and the entire sample.

The main findings of the panel causality test suggested by Dumitrescu and Hurlin (2012) reveal that remittances Granger-cause inflation in all country groups. Yet, the results indicate that there is no bidirectional causality between remittances and inflation in the countries selected and inflation is caused by remittances in Estonia and Latvia only. On the other hand, remittances have a positive impact on inflation in some countries, while no impact has been established in others.

As a main conclusion, we confirm that remittances can cause inflation in the analysed countries of Central and Eastern Europe. This may involve welfare costs and it is therefore important to consider the positive and negative impacts of remittances in making economic decisions. In fact, as a household receives remittance inflow continuously, it becomes more solvent and, after attaining a reasonable life standard, the household can consider investing in other sectors. These investments could help the development of productive sectors, which may induce a rise of the commodity prices. The financial intermediaries should be creative and prudent in attracting remittances as deposits and converting them into loans extended to the private sector.

References

- Abosedra, Salaheddin, and Ali Fakh.** 2017. "Assessing the Role of Remittances and Financial Deepening in Growth: The Experience of Lebanon." *Global Economy Journal*, 17(1): 1-19. <http://dx.doi.org/10.1515/gej-2015-0059>
- Aisen, Ari, and Francisco Veiga.** 2005. "Does Political Instability Lead to Higher Inflation? A Panel Data Analysis." International Monetary Fund Working Paper 05/49.
- Alfaro, Laura, Arendam Chanda, Sebnem Kalemli-Ozcan, and Salin Sayek.** 2004. "FDI and Economic Growth: The Role of Local Financial Markets." *Journal of International Economics*, 64(1): 89-112. [http://dx.doi.org/10.1016/S0022-1996\(03\)00081-3](http://dx.doi.org/10.1016/S0022-1996(03)00081-3)
- Arellano, Manuel, and Stephen Bond.** 1991. "Some Tests of Specification for Panel Data: Monte Carlo Evidence and an Application to Employment Equations." *Review of Economic Studies*, 58(2): 277-297. <http://dx.doi.org/10.2307/2297968>
- Arellano, Manuel, and Olympia Bover.** 1995. "Another Look at the Instrumental Variable Estimation of Error-Components Models." *Journal of Econometrics*, 68(1): 29-51. [http://dx.doi.org/10.1016/0304-4076\(94\)01642-D](http://dx.doi.org/10.1016/0304-4076(94)01642-D)
- Ball, Christopher, Claude Lopez, and Javier Reyes.** 2012. "Remittances, Inflation and Exchange Rate Regimes in Small Open Economies." *The World Economy*, 36(4): 487-507. <http://dx.doi.org/10.1111/twec.12042>
- Baltagi, Badi.** 2001. *Econometric Analysis of Panel Data*. 2nd ed. Chichester: John Wiley & Sons.
- Baum, Anja, Marcos Poplawski-Ribeiro, and Anke Weber.** 2012. "Fiscal Multipliers and the State of the Economy." International Monetary Fund Working Paper 12. <http://dx.doi.org/10.5089/9781475565829.001>.
- Blundell, Richard, and Stephen Bond.** 1998. "Initial Conditions and Moment Restrictions in Dynamic Panel Data Models." *Journal of Econometrics*, 87(1): 115-143. [http://dx.doi.org/10.1016/S0304-4076\(98\)00009-8](http://dx.doi.org/10.1016/S0304-4076(98)00009-8)
- Bölükbaş, Mehmed, Mehmet Topal, and Hakan Hotunluoğlu.** 2018. "Testing for Twin Deficits Hypothesis for EU-27 and Turkey: A Panel Granger Causality Approach under Cross-Sectional Dependence." *Romanian Journal of Economic Forecasting*, 21(4): 101-119.
- Breusch, Trevor S., and Adrian R. Pagan.** 1980. "The Lagrange Multiplier Test and Its Application to Model Specification in Econometrics." *Review of Economic Studies*, 47(1): 239-253. <http://dx.doi.org/10.2307/2297111>
- Bugamelli, Matteo, and Franchesko Paterno.** 2009. "Do Workers' Remittances Reduce the Probability of Current Account Reversals?" *World Development*, 37(12): 1821-1838. <http://dx.doi.org/10.1016/j.worlddev.2009.04.002>
- Cáceres, Luis René, and Nolvía Nery Saca.** 2006. "What Do Remittances Do? Analyzing the Private Remittance Transmission Mechanism in El Salvador." International Monetary Fund Working Paper 250. <http://dx.doi.org/10.5089/9781451865103.00>
- Cotarelli, Carlo.** 1998. "The Non-Monetary Determinants of Inflation: Panel Data Study." International Monetary Fund Working Paper WP/98/23.
- Desai, Mihir, Devesh Kapur, John McHale, and Keith Rogers.** 2003. "The Fiscal Impact of High Skilled Emigration: Flows of Indians to the U.S." Weatherhead Center for International Affairs Working Paper 03-01.

- Dumitrescu, Elena-Ivona, and Christophe Hurlin.** 2012. "Testing for Granger Non-Causality in Heterogeneous Panels." *Economic Modelling*, 29(4): 1450-1460. <http://dx.doi.org/10.1016/j.econmod.2012.02.014>
- Elahi, Syed Margub, and Md. Hasanur Rahman.** 2021. "Remittance and Inflation Nexus in Bangladesh: Application of Dynamic ARDL Model with Linear Trend." *Indonesian Journal of Business and Economics*, 4(2). <http://dx.doi.org/10.25134/ijbe.v4i2.4513>
- Ghauri, Saghir, Ahmed Rizwan, Vveinhardt Jolita, Streimikiene Dalia, and Qureshi Khalid.** 2019. "The Effects of Remittances on Inflation (CPI and WPI) and Exchange Rate: A Case of Pakistan." *Romanian Journal of Economic Forecasting*, 22(2): 146-165.
- Glytsos, Nicholas.** 2002. "The Role of Migrant Remittances in Development: Evidence from Mediterranean Countries." *International Migration*, 40(1): 5-26. <http://dx.doi.org/10.1111/1468-2435.00183>
- Granger, Clive W. J.** 1969. "Investigating Causal Relations by Econometric Models and Cross-Spectral Methods." *Econometrica*, 37(3): 424-438. <http://dx.doi.org/10.2307/1912791>
- Granger, Clive W. J.** 2003. "Forecasting Volatility in Financial Markets: A Review." *Journal of Economic Literature*, 41(2): 478-539. <http://dx.doi.org/10.1257/002205103765762743>
- Gruben, William C., and Darryl McLeod.** 2002. "Capital Account Liberalization and Inflation." *Economics Letters*, 77(2): 221-225. [http://dx.doi.org/10.1016/S0165-1765\(02\)00137-4](http://dx.doi.org/10.1016/S0165-1765(02)00137-4)
- Hausman, Jerry A.** 1978. "Specification Tests in Econometrics." *Econometrica*, 46(6): 1251-1271. <http://dx.doi.org/10.2307/1913827>
- Hsiao, Cheng.** 2014. *Analysis of Panel Data*. 3rd ed. Cambridge, M. A.: Cambridge University Press.
- Im, Kyung So, M. Hashem Pesaran, and Yongcheol Shin.** 2003. "Testing for Unit Roots in Heterogeneous Panels." *Journal of Econometrics*, 115(1): 53-74. [http://dx.doi.org/10.1016/S0304-4076\(03\)00092-7](http://dx.doi.org/10.1016/S0304-4076(03)00092-7)
- Iqbal, Javed, Nosheen Misbah, and Ammara Javed.** 2013. "The Nexus between Foreign Remittances and Inflation: Evidence from Pakistan." *Pakistan Journal of Social Sciences*, 33(2): 331-342.
- Johansen, Søren.** 1988. "Statistical Analysis of Cointegration Vectors." *Journal of Economic Dynamics and Control*, 12(2-3): 231-254. [http://dx.doi.org/10.1016/0165-1889\(88\)90041-3](http://dx.doi.org/10.1016/0165-1889(88)90041-3)
- Johansen, Søren, and Katarina Juselius.** 1990. "Maximum Likelihood Estimation and Inference on Cointegration - With Applications to the Demand for Money." *Oxford Bulletin of Economics and Statistics*, 52(2): 169-210. <http://dx.doi.org/10.1111/j.1468-0084.1990.mp52002003.x>
- Jörg, Breitung, and Samarjit Das.** 2005. "Panel Unit Root Tests under Cross-Sectional Dependence." *Statistica Neerlandica*, 59(4): 414-433. <http://dx.doi.org/10.1111/j.1467-9574.2005.00299.x>
- Judson, Ruth A., and Ann Owen.** 1999. "Estimating Dynamic Panel Data Models: A Guide for Macroeconomists." *Economics Letters*, 65(1): 9-15. [http://dx.doi.org/10.1016/S0165-1765\(99\)00130-5](http://dx.doi.org/10.1016/S0165-1765(99)00130-5)
- Khan, Zakir Saadullah, and Shamimul Islam.** 2013. "The Effects of Remittances on Inflation: Evidence from Bangladesh." *Journal of Economics & Business*, 19(2): 198-208.

- Khurshid, Adnan, Yin Kedong, Adrian Cantemir Călin, and Oana Popovici.** 2016. "Do Remittances Hurt Domestic Prices? New Evidence from Low, Lower-Middle and Middle-Income Groups." *Romanian Journal of Economic Forecasting*, 19(4): 95-114.
- Kumar, Manmohan S., and Jaejoon Woo.** 2010. "Public Debt and Growth." International Monetary Fund Working Paper 10/174.
- Maddala, Gangadharrao Soundalyarao, and Shaowen Wu.** 1999. "A Comparative Study of Unit Root Tests with Panel Data and a New Simple Test." *Oxford Bulletin of Economics and Statistics*, 61(S1): 631-652.
<http://dx.doi.org/10.1111/1468.0084.0610s1631>
- Mohammad, Sulaiman D., S. Khurram Arslan Wasti, Adnan Hussain, and Irfan Lal.** 2009. "An Empirical Investigation between Money Supply, Government Expenditure, Output and Prices: The Pakistan Evidence." *European Journal of Economics, Finance and Administrative Sciences*, 17: 60-68.
- Narayan, Paresh Kumar, Seema Narayan, and Sagarita Mishra.** 2011. "Do Remittances Induce Inflation? Fresh Evidence from Developing Countries." *Southern Economic Journal*, 77(4): 914-933. <http://dx.doi.org/10.4284/0038-4038-77.4.914>
- Nath, Hiranya K., and Ulyses Balderas.** 2008. "Inflation and Relative Price Variability in Mexico: The Role of Remittances." *Applied Economics Letters*, 15(3): 181-185.
<http://dx.doi.org/10.1080/13504850600722070>
- Nazlioglu, Saban.** 2011. "World Oil and Agricultural Commodity Prices: Evidence from Nonlinear Causality." *Energy Policy*, 39(5): 2935-2943.
<http://dx.doi.org/10.1016/j.enpol.2011.03.001>
- Nickell, Stephen.** 1981. "Biases in Dynamic Models with Fixed Effects." *Econometrica*, 49(6): 1417-1426. <http://dx.doi.org/10.2307/1911408>
- Nisar, Anum, and Saira Tufail.** 2013. "An Analysis of Relationship between Remittances and Inflation in Pakistan." *Zagreb International Review of Economics & Business*, 16(2): 19-38.
- Patillo, Cathrine, Helene Poirson, and Luca Ricci.** 2002. "External Debt and Growth." International Monetary Fund Working Paper 69.
- Pesaran, M. Hashem.** 2004. "General Diagnostic Tests for Cross Section Dependence in Panels." Cambridge Working Paper in Economics 0435.
- Pesaran, M. Hashem.** 2006. "Estimation and Inference in Large Heterogeneous Panels with a Multifactor Error Structure." *Econometrica*, 74(4): 967-1012.
<http://dx.doi.org/10.1111/j.1468-0262.2006.00692.x>
- Pesaran, M. Hashem, Ulalah Aman, and Yamagata Takashi.** 2008. "A Bias-Adjusted LM Test of Error Cross-Section Independence." *The Econometrics Journal*, 11(1): 105-127.
<http://dx.doi.org/10.1111/j.1368-423X.2007.00227.x>
- Petkovski, Mihail, Jasminka Dodeva, and Vesna Georgieva.** 2011. "The Macroeconomic Effects of Remittances in Southeast Europe." International Institute for Middle-East and Balkan Studies Working Paper.
- Qiang, Sun, Adnan Khurshid, Adrian Cantemir, and Khalid Khan.** 2019. "Do Remittances Contribute to the Development of Financial Institution? New Evidence from the Development World." *Romanian Journal of Economic Forecasting*, 22(2): 78-97.
- Rivera, John Paolo R., and Tereso S. Tullao Jr.** 2020. "Investigating the Link between Remittances and Inflation: Evidence from the Philippines." *South East Asia Research*, 28(3): 301-326. <http://dx.doi.org/10.1080/0967828X.2020.179368>

- Roodman, David.** 2009. "How to Do xtabond2: An Introduction to Difference and System GMM in Stata." *The Stata Journal*, 9(1): 86-136.
<http://dx.doi.org/10.1177/1536867X0900900106>
- Sbia, Rashid, and Helmi Hamdi.** 2020. "Remittances and Inflation: Evidence from OPEC Countries." *Economics Bulletin*, 40(3): 2471-2483.
- Termos, Ali, George Naufal, and Ismail Genc.** 2013. "Remittance Outflows and Inflation: The Case of the GCC Countries." *Economics Letters*, 120(1): 45-47.
<http://dx.doi.org/10.1016/j.econlet.2013.03.037>
- Thapa, Sridhar, and Sanjaya Acharya.** 2017. "Remittances and Household Expenditure in Nepal: Evidence from Cross-Section Data." *Economies*, 5(2): 1-17.
<http://dx.doi.org/10.3390/economies5020016>

THIS PAGE INTENTIONALLY LEFT BLANK